

# DATASHEET

## TRACTION BATTERY NML16-6DC

# DT

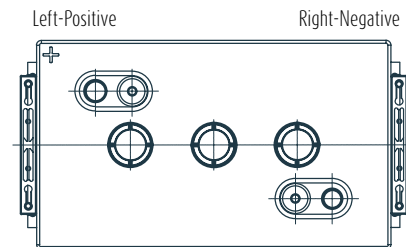
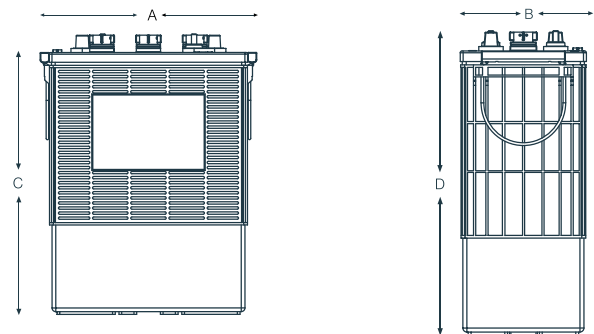


### Electrical Specification

Nominal voltage	<b>6V</b>
Rated capacity	<b>390 Ah (C20 and 25 °C)</b>
Plate technology	<b>Antimony / Antimony</b>
Separator	<b>Polyethylene + glass mat</b>
Electrolyte	<b>Sulphuric acid (SG 1,28) OCV 6.35V</b>
Standards	<b>IEC 60254; IEC 61427</b>
Case / Lid material	<b>Polypropylene</b>
Lid type	<b>Flat</b>
Terminal type	<b>Dual</b>
Carrying Handles	<b>Available</b>

### Amp Hours (AH)

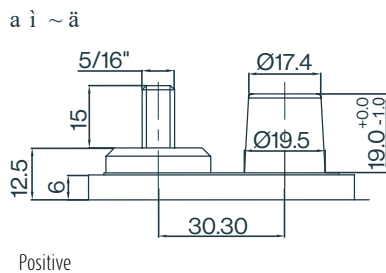
C5	C20
320Ah	390Ah



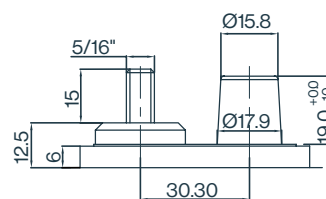
### Physical Specification

Length (A)	<b>308 mm / 12.1 inch</b>
Width (B)	<b>174 mm / 6.9 inch</b>
Height (C)	<b>388 mm / 15.3 inch</b>
Height (D)	<b>416 mm / 16.4 inch</b>
Typical weight	<b>48,00 kg / 105,8 lbs</b>

It is mandatory to check the electrolyte level every 3 months and top up with deionized water to the markings.



Positive



Negative