

TECHNICAL DATA SHEET
Ref. 500001
Unipolar thermoplastic
BATTERY MASTER SWITCH
24VDC / 75A



GENERAL CHARACTERISTICS

Protection degree: IP67
 Ambient temperature: -40°C to +85°C
 Weight: 0.152 Kg approx.
 Contacts: Copper
 Connections: not polarized

FIELDS OF APPLICATION

Nautical, handling vehicles, industrial vehicles, agriculture machinery, industry...

POWER CIRCUIT

Connection: M10 terminals
 Tightening torque: 1.2 +/- 0.1 daN·m
 Type: D1 normally open
 Nominal current: 75 A
 Nominal voltage: 24 VDC
 Max. capacity: 300 A during 5 seconds

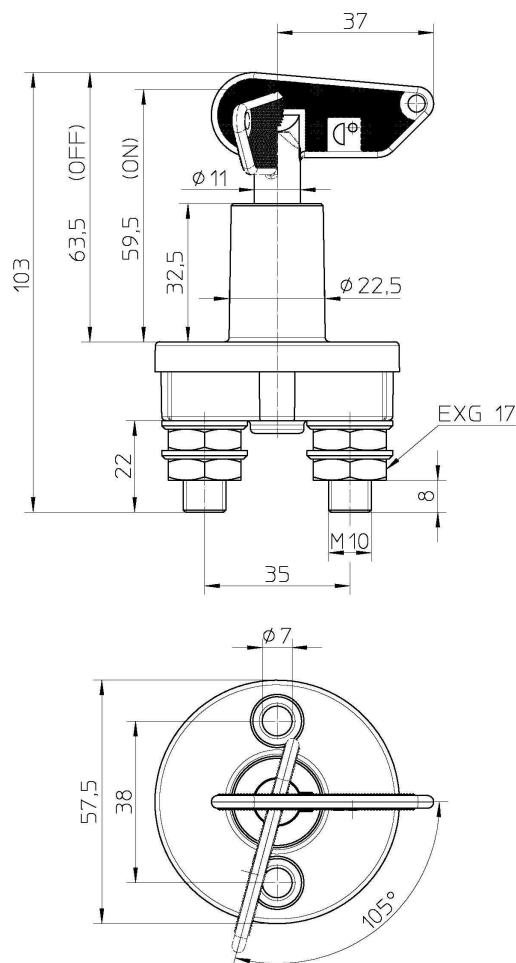
PARTICULAR CHARACTERISTICS:

Marine
 Removable handle in open position

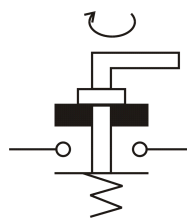
SPARE PARTS

Plastic Handle	500032
Chain	520009

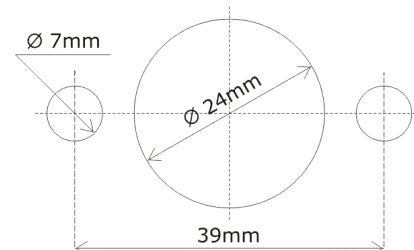
Size diagrams



Connection diagram



Fixing diagram



**ELECTRO
MECANICA
CORMAR**

P.I. Llinars Park, C/ Tecnologia, 82, NAVE N°7
 08450 LLINARS DEL VALLÈS
 BARCELONA (SPAIN)
 Tel. : + 34.93.732.35.91 - Fax : + 34.93.732.35.90
WWW.CORMAR.ES - info@cormar.es