

**TECHNICAL DATA SHEET**  
**Ref. 500020**  
**Unipolar thermoplastic**  
**BATTERY MASTER SWITCH**  
**24VDC / 75A**



#### GENERAL CHARACTERISTICS

Protection degree: IP61  
 Ambient temperature: -40°C to +85°C  
 Weight: 0.162 Kg approx.  
 Contacts: Copper  
 Connections: not polarized

#### FIELDS OF APPLICATION

Handling vehicles, industrial vehicles,  
 agriculture machinery, industry...

#### POWER CIRCUIT

Connection: M10 terminals  
 Tightening torque: 1.2 +/- 0.1 daN·m  
 Type: D1 normally open  
 Nominal current: 75 A  
 Nominal voltage: 24 VDC  
 Max. capacity: 300 A during 5 seconds

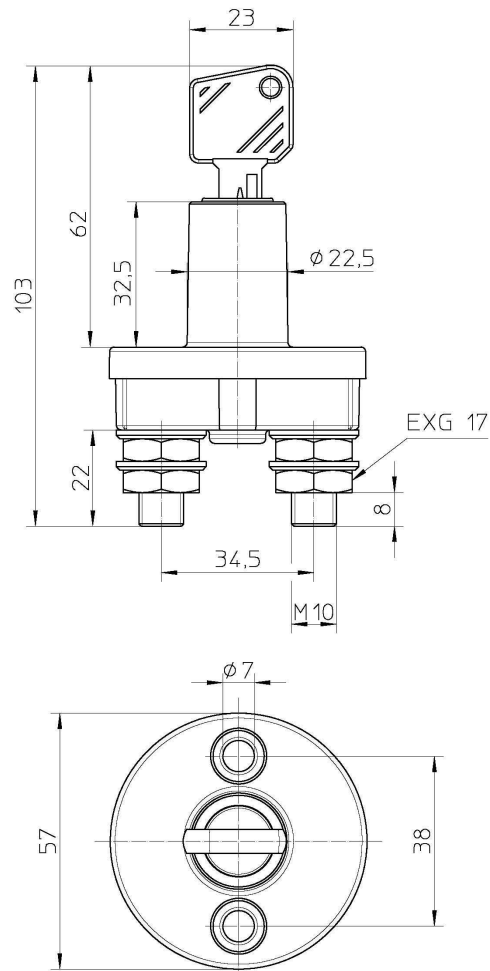
#### PARTICULAR CHARACTERISTICS:

Security key control

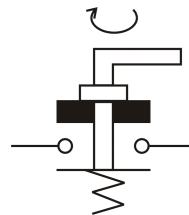
#### SPARE PARTS

Key 520000

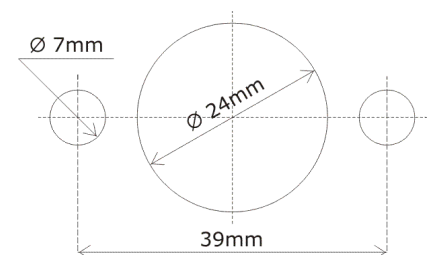
#### Size diagrams



#### Connection diagram



#### Fixing diagram



**ELECTRO  
MECANICA  
CORMAR**

P.I. Llinars Park, C/ Tecnologia, 82, NAVE Nº7  
 08450 LLINARS DEL VALLÈS  
 BARCELONA (SPAIN)  
 Tel. : + 34.93.732.35.91 - Fax : + 34.93.732.35.90  
[WWW.CORMAR.ES](http://WWW.CORMAR.ES) - [info@cormar.es](mailto:info@cormar.es)