

TECHNICAL DATA SHEET

Ref. 530001

UNIPOLAR ELECTROMAGNETIC
BATTERY MASTER SWITCH
24VDC / 300A



GENERAL CHARACTERISTICS

Protection degree: IP65
Ambient temperature: -40°C to +80°C
Weight: 1.2 Kg approx.
Contacts: Double cut copper
Connections: not polarized
Is working in all positions

FIELDS OF APPLICATION

Handling vehicles, industrial vehicles,
agriculture machinery, industry...

CONTROL CIRCUIT

Breakaway starting current: 4.5 A (20 ms)
Holding current: 0,25 A
Absorbed power from the coil: <6 W
Guaranteed interlocking tension: 18 V
Disengaging tension: ≤ 6 V
Connections by M5 terminals
Tightening torque: 0.4 +/- 0.2 daN·m

POWER CIRCUIT

Connection: M10 terminals
Tightening torque: 1.4 +/- 0.2 daN·m
Type: normally open unipolar
Max. using tension: 48 V
Capacity:
300 A in continuous
2400 A during 1 second
600A during 20 seconds.

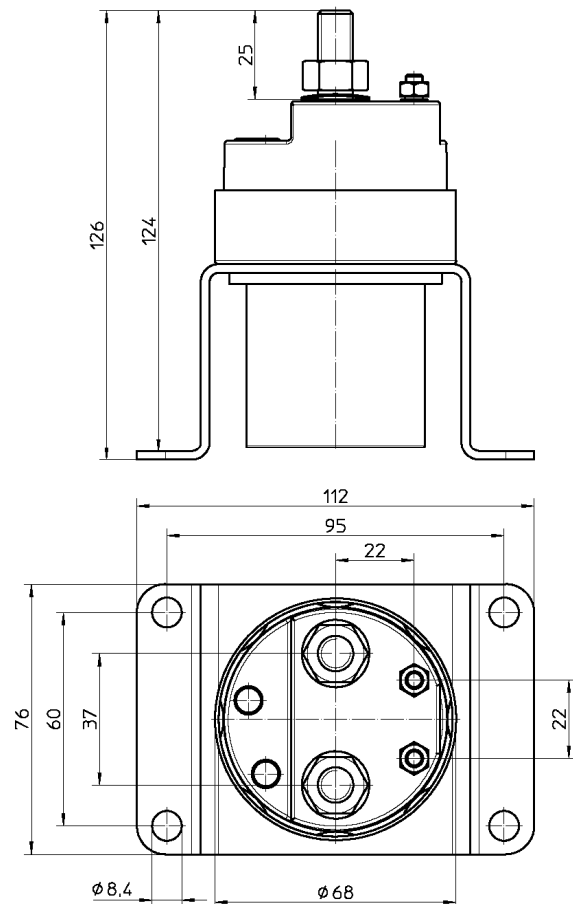
PARTICULAR CHARACTERISTICS:

Black galvanised finishing.
Corrosion test: 200 h salt spray resistance

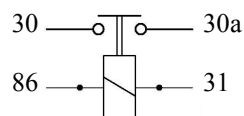


P.I. Llinars Park, C/ TECNOLOGIA, 82, NAVE N°7
08450 LLINARS DEL VALLÈS
BARCELONA (SPAIN)
Tel. : + 34.93.732.35.91 - Fax : + 34.93.732.35.90
WWW.CORMAR.ES - info@cormar.es

Size diagrams



CIRCUIT:



Fixing diagram

