

TECHNICAL DATA SHEET

Ref. 530101

Unipolar battery

MASTER SWITCH

24VDC / 150A



GENERAL CHARACTERISTICS

Protection degree: IP65

Ambient temperature: -40°C to +85°C

Weight: 0.24 Kg approx.

Contacts: Double cut copper

Connections: not polarized

FIELDS OF APPLICATION

Handling vehicles, industrial vehicles,
agriculture machinery, industry, navy...

POWER CIRCUIT

Connection: M10 terminals

Tightening torque: 0.9 +/- 0.1 daN.m

Type: normally open unipolar

Max. using tension: 48 V

Capacity: 150 A in continuous
450 A during 330 seconds
1000 A during 5 seconds

PARTICULAR CHARACTERISTICS:

Zinc plated finishing.

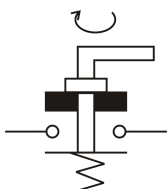
Corrosion test: 200h salt spray resistance

SPARE PARTS

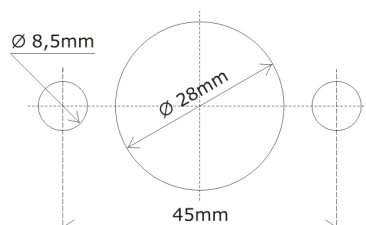
Handle

580019

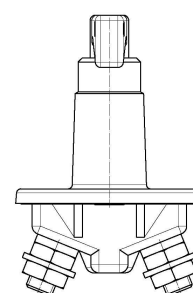
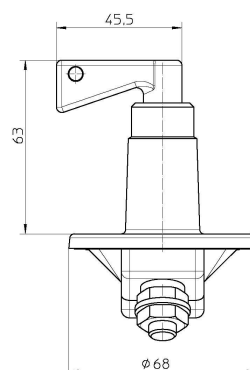
Connection diagram



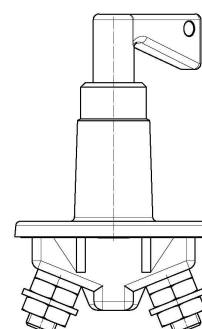
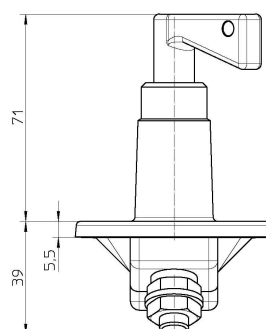
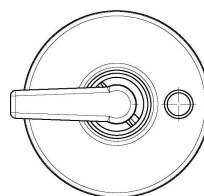
Fixing diagram



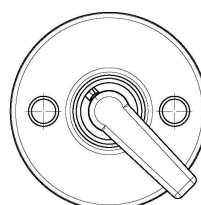
Size diagrams



CLOSED



OPEN



P.I. LLINARS Park, C/ TECNOLOGIA, 82, NAVE Nº7

08450 LLINARS DEL VALLÈS

BARCELONA (SPAIN)

Tel. : + 34.93.732.35.91 - Fax : + 34.93.732.35.90

WWW.CORMAR.ES - info@cormar.es